

New!

Frost Fighter

Clear View II

Defroster installation and replacement made easy



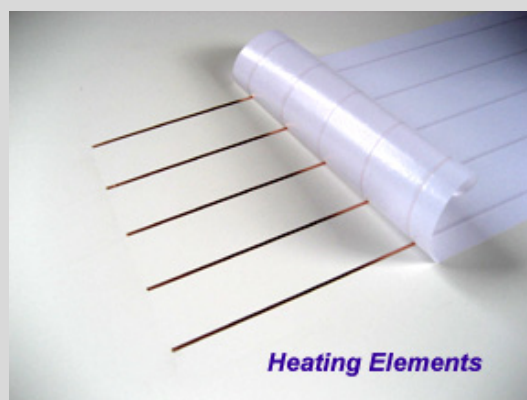
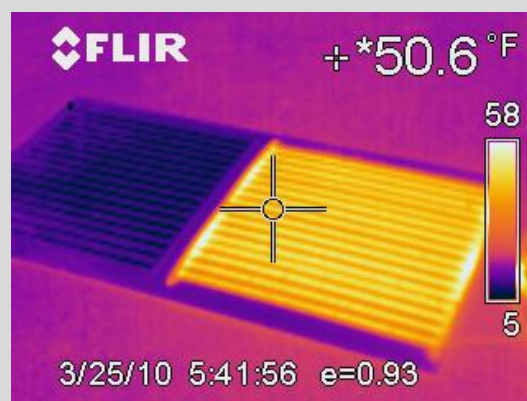
Simple Window Defrosting

Over 200 defroster sizes
in 12 and 24 volt

Easy to install defrosters and
controls with proven heating
performance and a professional
factory look.

Clear View Defrosters reliably melt
snow and ice even in the coldest
winter conditions.

Now 40% warmer



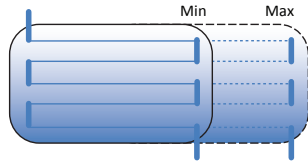
Defroster Product Guide

World leader in aftermarket defrosters and defroster control solutions in 12 and 24 volt.

Frost Fighter Clear View II Defrosters made easy

Simple Window Defrosting

Frost Fighter® Clear View II Defrosters match the heating performance of factory installed rear window defrosters, melting snow and ice in minutes. Cost effective and easy to install, new Clear View II defrosters provide full window coverage with an attractive factory appearance.



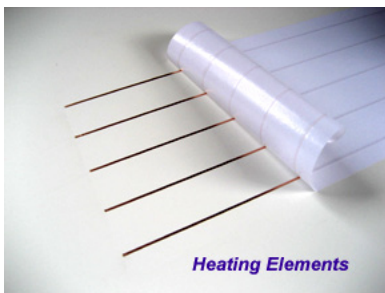
Window Defrosting

Anyplace window defrosting is needed Clear View II defrosters are a simple and cost effective solution.

- ✓ Passenger cars
- ✓ Trucks
- ✓ Tractors
- ✓ Crane cabs
- ✓ Heavy equipment
- ✓ Snow moving equipment
- ✓ Ship cabins
- ... many other applications

How They Work

Clear View defrosters have an electrical resistance which, when powered, provides the heat needed to

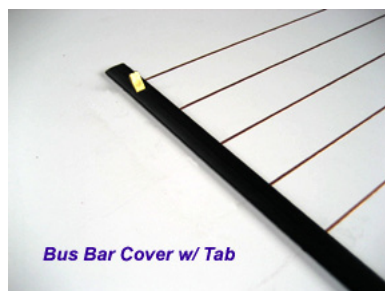


clear windows of snow and ice in minutes. Heating is accomplished through contact between the defroster elements and the window. The defroster is connected

electrically through the buss bar tabs to power and ground, and activated with the automatic ThermaSync defroster control and switch.

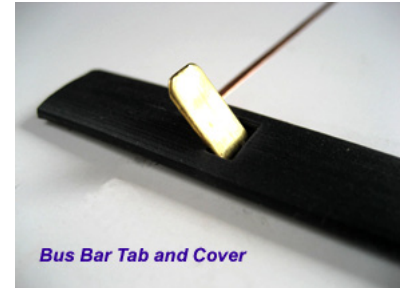
Easy Application

Clear View heating elements come on pre-spaced rolls which are trimmed to length and applied directly on the window for a custom defroster fit.



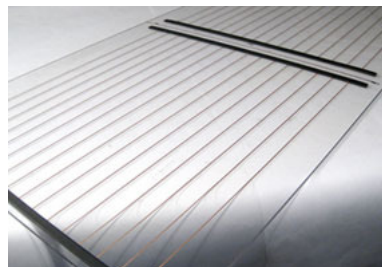
Complete Defrost Solutions

Clear View II defrosters include ThermaSync® controls and full wire harness installation kit. Individual defrosters and controls are also available.



Connections

The side buss bars include integral tabs positioned for easy connection to ThermaSync® defroster controls or to existing defroster wiring.



Finished Appearance

Heating elements match the brownish color of factory defrosters and adhere directly to the glass for

improved visibility and safe winter driving.

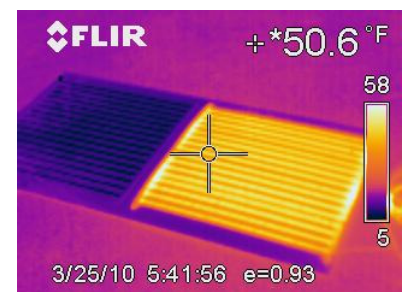
No backing is left on the window to fade, crack or yellow.

More Performance

Clear View II feature improved defroster performance with a 40% increase in heating and more aggressive bonding technology for a new level of durability.

New Defroster Sizes and Options

ThermaSync controls modulate the input power and allow for many new defrosters sizes and options including flexible auto-off timing and control of several defrosters with a single switch. Available in 12 and 24 volt.



Infrared image showing a Clear View II Defroster. Right side is on.

ThermaSync Defroster controls with smarts

More options, less hassle

New ThermaSync® defroster controls are the perfect companion to Clear View II and other defrosters.

They feature an easy to mount defroster switch with indicator light, adjustable automatic shut off timing, power modulation and can be used with the SwitchBoss to control multiple defrosters with a single switch.

With the addition of a Switch Boss, ThermaSync controls can activate several defrosters at once through a single switch making the system ideal for multiple defroster installations like cabs.



ThermaSync Defroster Control and Switch

Power Modulation

ThermaSync Controls can modulate power to the defroster from 3% up to 100%. This feature allows for hundreds of new Clear View II defroster sizes to fit almost any window.

New Voltages

The Clear View II defrosters and ThermaSync controls are available in 12 and 24 volts. Nobody else does that!

ThermaSync Control Operation

Pressing the defrost symbol on the remote switch turns the defroster on. The defroster stays on until the switch is pressed again or the control times out.

The timer can be set to time out from 10 to 160 minutes or can be left on indefinitely depending on the internal jumper settings.

Each control comes with full instructions.

One Switch, Multiple Defrosters

A single switch can activate several defrosters using Switch Boss. This network control is good for cabs and other applications the require several defrosters to be activated from a single switch.



ThermaSync Switch Boss activates several defrosters from a single switch.

Mounting

The ThermaSync control can be secured out of sight under the dash while the defroster switch can be mounted in dash.

Installation Options

Clear View II Defrosters and ThermaSync Controls are available independently or with a full installation kit which includes the wire harness, fuse, switch mounting plate, power tap, wire ties, surface cleaner/adhesion promoter and full instructions.



*Complete defroster kit.
Representative photo only. Actual parts may differ.*

See the Clear View Master Catalog which shows all the defroster sizes available.

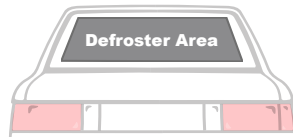
Frost Fighter Clear View II Ordering and FAQ

How to order

To order Clear View II Defrosters, follow the steps below.

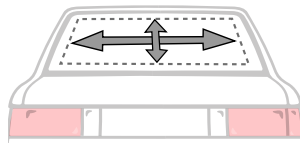
① Determine Defrost Area

Take a look at the window to establish the defrost area. The elements do not need to completely fill the area to be effective.



② Measure Defrost Area

Allow at least 1.5 inches (3.8) of clearance from the window edge. On vehicles with tightly curving windows the defroster should stop before the radius. Take back up lights into account.

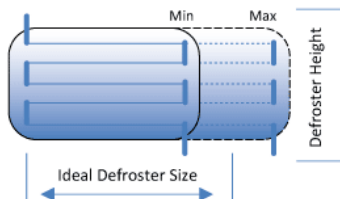


Important! The defroster height (top-to-bottom) is fixed by the number of grid lines and cannot be changed. The defroster width (side-to-side) can be trimmed within the minimum and maximum defroster sizes indicated.

③ Select the Clear View Kit

Select the defroster that fits the height (top-to-bottom) of the window. Then select the defroster width (side-to-side) between the minimum and maximum width for the defroster.

The height listed includes the tab ends which are 9/16 in (1.4 cm) top and bottom on the defroster.



Full or Stick?

Full Defrosters include a ThermaSync Control and Switch plus a complete installation kit and wire harness. Stick Kit Replacements include only the defroster and instructions. **Stick Kits must use defrosters with 100% modulation.**



Defroster Repair! Defroster repairs are easy with our full line repair kits including tab bonding, tab replacement, connectors, grid repair and many other solutions.



Doctor Defroster says...

"It really pays to understand the defroster before you start. Read the instructions, layout all the parts and then read the instructions again."

- Doc

What you need to know

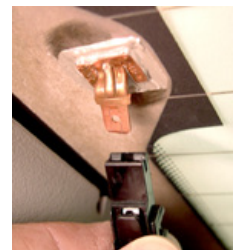
On vehicles with tightly curving glass at the edges of the window the defroster should stop before the tight radius of the glass. The kits buss bars should be placed in the relatively flat area of the glass. The buss bars can be angled 1-3 inches to accommodate windows which are wider at the base.

Clear View Stick Kit defrosters can be used to replace severely damaged defrosters that are not repairable using Frost Fighter repair kits. Stick kits include only the defroster and can be connected to the vehicle's existing wiring. Stick kits require defrosters designed for 100% power modulation ONLY.

Window tint removal can pull off the conductive defroster elements damaging it sometimes irreparably. Clear View defrosters cannot be applied over tint - but they can be tinted over.

Something to Consider

Clear View defrosters are engineered products and must be installed to the instructions. Changing the number of grid lines or layout may cause the defroster to fail. Please take the time when ordering to select the right defroster for the job.



Defroster Tab Repaired!